

G20i Thermal Ink Jet Coder

Easy to use, all in one, single sided coding solution



High quality print

Print up to 600x600dpi high resolution human and machine readable codes on paper, card, plastics, metal and more with Domino's inks.

Simple to use

Line side control of the G20i is simple: connect either on a mobile device, use the keyboard or link to a PC. The integrated photocell automatically starts the print cycle.

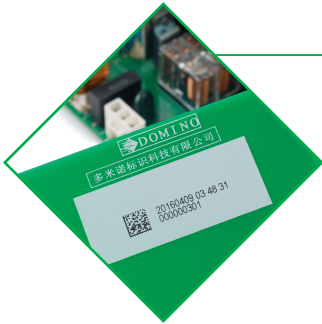


Compact and versatile

The small footprint of the G20i makes it easy to install within existing production lines. Remote control via Bluetooth app or PLC helps to meet tough space and access restrictions.

Engineered solutions

The G20i supports database communication enabling unique item level coding for promotional and anti-counterfeit tracking applications.



Powerful label designer

Easily create and save your labels on any device with the web browser based label designer. Load the required label to the G20i via USB – dynamic fields are automatically updated.



The G20i is ideally suited to high resolution coding on the wide range of packaging materials used in FMCG industries.

Simple to Install. Simple to Configure. Simple to Code.

The Domino G20i is highly cost efficient, with simple self install that does not require specialist installation engineers. The all in one package provides everything you need to get your line up and running. The maintenance free configuration does not require any service contracts. The G20i is a versatile coding solution on many substrates like paper, card, plastic, metal, films and foils.



Technical Specification: G20i

Coding options	Graphics, alphanumeric texts; QR and 1D barcodes (grade B) - Code 39, Code 2/5, Code 128, UPC-A Code 93, EAN 8, Codabar, Code 11	Range Specifications	Construction Operating voltage Amperage Frequency Operating temperature	Powder coated steel 100 - 240 VAC 1.4A 50 - 60Hz +5°C to 50°C (dependant on ink properties)
Font sizes	Font heights - 1 line = 12.7mm, 2 line = 5.92mm, 3 line = 3.83 mm, 4 line = 2.54mm, 6 line = 1.69mm		Operating relative humidity	10% to 90% non condensing
Print head	1 embedded print head		Inks	A range of fast drying water and solvent based inks for porous and non-porous substrates
Print height	12.7 mm / 0.5"		G-Series i-Tech features	Automatic ink cartridge detection, automatic ink parameter setting, automatic ink level recording
Print speed	Constant print speed from 180m/min (590 ft/min) at 100 dpi to 30m/min (98 ft/min) at 600 dpi (horizontal resolution)			
Photocell	Embedded photocell			
Digital outputs	3 status outputs (24V)			
User interfaces	71.12mm, 256K colour WYSIWYG entry, PC (Windows) App, or Android based application Android App languages: English (default), Simplified Chinese, French, German, Spanish, Russian, Portuguese, Korean, Polish, Vietnamese, Thai, Indonesian (Bahasa), Japanese			
External memory	USB 2.0			
On board controller languages	English (default), Simplified Chinese, French, German, Spanish, Russian, Portuguese, Korean, Polish and Vietnamese			
Controller dimensions	Width: 74.5mm / Depth: 83mm / Length: 107.5mm / Weight: 450g			



Contact us

W: www.wichmannsystems.com

T: +254 742 923 711

E: Contact@wichmannsystems.com

